

UPSTAGED

COFFS HARBOUR MUSICAL COMEDY COMPANY

• Welcome.....p1		• The Secret Garden Poster.....p8
• From the President.....p2		• Anniep9
• Diary Dates.....p3		• Annie Audition info.....p10
• The Secret Garden.....p4-p5		• Contact Details.....p11
• The Secret Garden photos.....p6-p7		

WELCOME!

We may have been a bit quiet for some months now, but we've been in the thick of rehearsals for 'The Secret Garden' and are close to being able to run the show all the way through. The standard of the vocal performances is incredible, and we do urge you not to miss this show. Check out wonderful photos on page 6 and 7.

You'll be seeing and hearing a lot about the show, we hope! We've had a couple of promotional appearances, at Garden Mania, the Botanical Gardens and elsewhere, even one with our own 'Pocket Orchestra', which we think went down very well.

On a completely different note, if you get a chance to catch CHAT's play, 'Two Floors Up', playing up to October 20th, you should - it's an eye-opening look at the damage that promiscuity and pornography can do. Confronting, but addresses issues that deserve to be aired, and features a cast of fine actors.

We invite you all to join us for a combined CHATS/CHMCC Christmas Party, on Saturday December 15th. The venue is our sheds at the theatre, as a sort of shed-warming too, so you will get to see the conversion work that's been going on. The party will start as soon as the performance of 'Scrooge' is over, from about 2pm, but times will be confirmed nearer the time. **BYO Everything**, including folding chairs!

We've also been working on planning next year's season, and are excited to announce a date for auditions for our first show of next year - 'Annie', directed by Donna Fairall. Auditions will be held on the first week of January; see page 9 and 10 for details. If you want to audition but will be away that weekend, please contact Donna well in advance to make alternative arrangements.

We're also hoping to be able to announce our second show for next year very soon! Meanwhile, if you can print out the poster on page 8 and put it up somewhere, please do so, or contact me for more hard copies.

Thanks to those who have already volunteered to help with ushering, please do contact Shalla, if you can help. We look forward to seeing you all at the theatre!

Di O'Ferrall - Secretary



Ushers

We need people to volunteer for Front of House for The Secret Garden, ie, ushering and selling programs.

If you would like to help out, please contact Shalla Thomas on gwandalan54@gmail.com.

Stage Hands

If you would like to help backstage for The Secret Garden, please contact

David Tune at d_tune@aapt.net.au

Posters

If you can help distribute flyers, or have contacts in a business that will display a poster for us, please either print the poster in this newsletter, or contact Di O'Ferrall for hard copies.

Email Di at

UPSTAGED

From the President



Hi all, and welcome to the beginning of the “pointy” end of the year, where it’s not just the weather hotting up!

The last couple of months have whizzed by in a blur of work/ rehearsal no. 1/work/rehearsal no. 2 and etc, but as always, the end justifies the means, and “2 Floors Up” (CHATS’ current production) has had an exceptional opening weekend, and if the promotional performances are any indication of

excellence, “The Secret Garden” is on course for a hugely successful run.

I can’t believe there’s only a few short weeks left till opening! I would like to briefly comment on the special members bulletin that went out since the last newsletter. The issues that were raised have all been sorted out, apologies given and gratefully received, and I would like to think that it is all well behind us now, and we can all go on doing what we love as one big theatrical family.

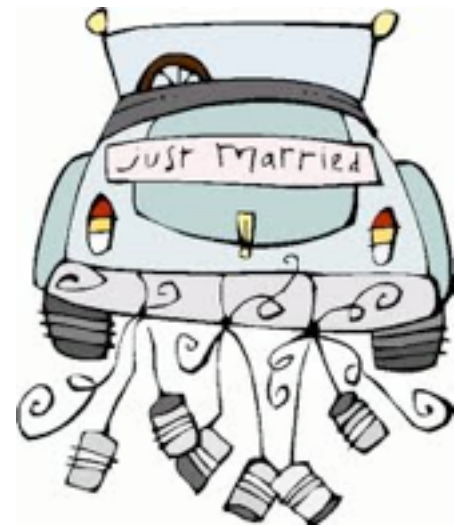
Hopefully many of you can join us for our combined Christmas/Shed Warming on December 15, if only just to pop on down and have a quickie (yes, I mean drink!) and a catch up, and gaze in wonder at the great work that has been done to the sheds. See ‘Diary Dates’ on page 3 for more details.

Congratulations to the two lovely couples that tied the knot recently, and to everyone involved in “All Shook Up”, a hugely entertaining night at the theatre!

And please send some love out to Laraine Crossland and Brian Carter, and Rex, Paula and Sophie Madigan, who are going through a difficult period, my thoughts are with you all.

Thank you everyone, for your contributions big and small, and hope to see you at the theatre!

Mauz



Sue Binsted and Ron Collingridge

Sue and Ron got married in a spontaneous service in Bellingen on November 17th.



EJ Ford and Brian May

Ej and Brian got married in a family ceremony at Darling Harbour, also on November 17th.

UPSTAGED



Diary Dates

2 Floors Up
 Written and Directed by Kelly McLoughlin-Wilden
 11 - 20 October 2013



Warning: This show contains sexual references, explicit language, and adult themes. Not suitable for children.

We dare you.

Coffs Harbour Musical Comedy Company brings the beloved children's classic to the stage

November 8th - December 1st 2013
 Wednesdays, Fridays, Saturdays at 7pm
 Saturdays & Sundays at 1pm



The SECRET GARDEN

Jetty Memorial Theatre
 02 6652 8088
www.jettytheatre.com

Based on the novel by Frances Hodgson Burnett
 Book & lyrics by Marsha Norman, Music by Lucy Simon
 by arrangement with Origin Theatrical on behalf of Samuel French, Inc.
 for more information, visit www.coffsharbourmusicalcomedycompany.com

Tickets \$21 - \$26
 Booking fees apply

Extra performance!
 Thurs Nov 28 at 7pm

CHMCC & CHATS
 COMBINED CHRISTMAS PARTY

SATURDAY 15TH DECEMBER

AT THE CHATS/CHMCC SHEDS
 JETTY THEATRE

FROM 2 pm

BYO Everything



SCROOGE!
 The Musical

55 minute adaptation
 Book, Music and Lyrics by Leslie Bricusse
 From a Christmas Carol By Charles Dickens

ORIGIN™
 Theatrical
 in association with Samuel French Ltd

Scrooge
 December 14th -18th
 Jetty Memorial
 Theatre

UPSTAGED

From the Director

We're starting to get a little bit excited now. Act One has been put in place from start to finish, and we are close to running Act two through as well.

The quality of the singing is just outstanding. It is an absolute joy to work with such a talented group, and the results will speak for themselves when we hit the stage in November.

One of the many highlights of our recent rehearsals has been the addition of our fantastic pocket orchestra with Mauz leading Lyneah, Natasha, Grace, Carol and Hayley in providing beautiful music to back our show. The depth that this adds to the vocal work is just magnificent.

On the promotional front we have had a strong presence in the Advocate over the last couple of weeks, and a great article in Focus magazine, backed up by our flyers, posters and t-shirts, which have been seen in some amazing places (Broadway in New York comes to mind!).

If you would like a 'Secret Garden' t-shirt of your own (they look fantastic), the Copy Kiosk upstairs at the Palm Centre can print the logo a shirt that you provide for \$20.

Contact us if you would like some posters to display in an appropriate place!

We have also presented a vignette of songs from the show at the Inner Wheel club dinner and at Garden Mania, with another 5 promotional performances at various venues scheduled over the upcoming weeks.

Many people are hard at work behind the scenes on sets (very close to being finished), costumes (looking fantastic so far), props (we have a wheelchair!), program (going to the printers very soon), hair and makeup design, sound effects, set dressing and the myriads of little details needed to get a great musical on stage.

If you would like to be involved in the show, we are always keen to hear from those interested in helping with backstage and front of house during the show. Please contact us if you are interested in being a part of this production.

Finally, tickets are on sale now via the Jetty Memorial Theatre website, (www.jettytheatre.com); get in now to get the best seats in the house, and let everyone know that this will be a truly remarkable show not to be missed



David Tune

Director, CHMCC's 'The Secret Garden'



UPSTAGED

The Secret Garden

Imagine, if you can, being a young person in a foreign country and finding that not only your parents, but everyone you know has died of cholera. Now imagine that you are whisked away to another country that you are unfamiliar with, to live with a relative you have never met. Then, add the fact that you are a constant reminder of all the loss and heartache that fills the house and its residents. This is how the story of Mary Lennox begins. Will Mary unlock the secrets of the house and garden and discover who is crying in the night?

In our latest production, thirteen-year-olds Sam Lagettie and Lizzy Tune give an amazing performance as Mary.



This is a massive challenge for a young performer, hardly ever off stage and with some complex songs, as well as the emotional and dramatic demands. They are both quite up to the challenge, and introduce Mary to the audience, firstly as quiet, sulky, and later, blossoming and loyal to those she loves.

The tragically dead Lily Craven, (appearing in spirit form only), is beautifully portrayed by Dee Tune. Her warm, motherly stage presence and beautifully clear soprano voice capture completely the gentle character of Lily, and we understand why widower Archibald Craven is so stricken in his grief for her loss.

Eli Pappas in the role of Mary's uncle Archibald, portrays his sadness and emptiness with a gentleness which engages the sympathy of the audience right from the start in a wonderful way.

Mary's initial companions are the perky chambermaid Martha, portrayed by Fiona Stiles, (Belle in *Beauty & the Beast*), with some fine vocal numbers, and Martha's brother Dickon, played by Lincoln Elliott, who has an impressive vocal performance in his solo, 'Winter's on the Wing'.

11 year olds James Tune & Jack McCormack (young Chip in *Beauty & the Beast*) play Mary's cousin Colin, whose very existence is only one of the secrets in the house and grounds that Mary is unaware of, but not for long.

These young boys are a delight to watch, as we see Colin initially portrayed as petulant and demanding, a bedridden boy who expects to die at any time, then becoming warmer and more positive under Mary's influence, to a lively, healthy boy at the end of the show.

The other secret Mary discovers is Lily's walled garden, which has been kept locked and abandoned since her death. Defying the stern housekeeper, Mrs. Medlock, (Jenny Beatson), Archibald's devious brother, Dr. Neville Craven, (Phillip Ranieri, who finally gets a chance to demonstrate his classically-trained voice), and encouraged by Martha, Dickon, and the gardener, Ben Weatherstaff, Mary finds the hidden key, unlocks the door to the secret garden, and begins to restore it.

Surrounded by a strong supporting cast, as well as some truly exceptional vocal performances, this production is a show you won't want to miss, particularly the unusual treat of a baritone/tenor duet in the incredible 'Lily's Eyes', sung by Eli Pappas and Phil Ranieri - guaranteed to give you goose bumps.

This story is about love and loss, about giving, discovering, yearning and belonging, and we guarantee that even the most curmudgeonly of theatre goers will be moved and uplifted.

The show opens on November 8th.

UPSTAGED



The Cast singing at Garden Mania



Dr. Neville Craven & his brother, Archie
Philip Ranieri & Eli Pappas



Lily & her sister, Rose
Dee Tune & Donna Fairall



The Fakir & the Ayah
Ren Holl & Jenny Garrett



Dickon and Ben, the gardener
Lincoln Elliott & Ben Pritchard



Archie & Lily
Eli Pappas & Dee Tune



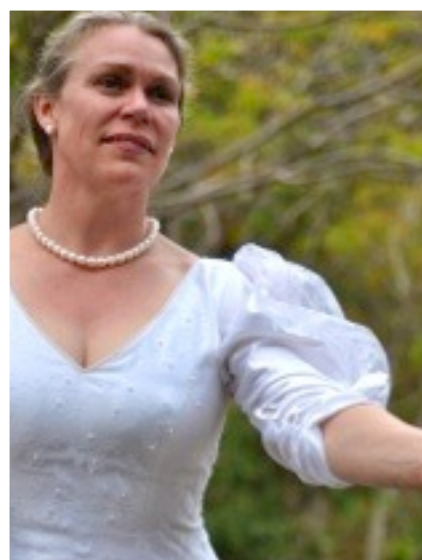
Mary Lennox
Samantha Lagettie



Mary Lennox
Lizzy Tune



Archie & Colin Craven
Eli Pappas & James Tune



Lily
Dee Tune



The Pocket Orchestra
Lyneah Boom, Natasha Corbett, Carol McCabe, Maureen Burgess, Grace Cooper & Hayley McCabe

Coffs Harbour Musical Comedy Company
brings the beloved children's classic to the stage



The **SECRET GARDEN**



November 8th - December 1st

Book & Lyrics by Marsha Norman
Music by Lucy Simon
Based on the novel by
Frances Hodgson Burnett

Directed by David Tune

Weds Nov 13, 20, 27 - 7pm

Fri Nov 8, 15, 22, 29 - 7pm

Sat Nov 9, 16, 23, 30 - 1pm & 7pm

Sun Nov 10, 17, 24, Dec 1 - 1pm

Jetty Memorial Theatre
Box Office 6652 8088

or online www.jettytheatre.com

Adults \$26

Concessions \$23

Booking fees apply

Extra performance Thursday Nov 28th, 7pm!



By arrangement with Origin Theatrical on behalf of Samuel French, Inc.



UPSTAGED

Hi everyone... I had so much fun with "Beauty and the Beast" last November I've come back for another crack at directing! And I'm lucky enough to be doing a show that I have loved ever since I was a child.

Based on the popular comic strip, Annie tells the extraordinary story of a little orphan in the depths of the 1930's who ends up in the lap of luxury with billionaire Oliver Warbucks.

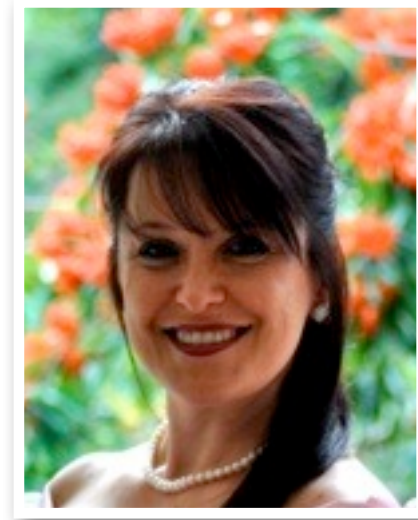
Unlike most of the other children at Miss Hannigan's orphanage, spunky Annie believes that her parents are still alive and will one day return to claim her. So when Mr. Warbucks offers to adopt her, she asks the most powerful man in America to help find her real mom and dad instead, and he agrees.

Warbucks' whopping reward for Annie's parents attracts the attention of con artists Rooster, Lily and the wicked Miss Hannigan, who hatch a plot to kidnap Annie and take the \$50,000 reward.

There are seven kids roles aging from 8yrs-13yrs, and they are ALL GIRLS (sorry boys but it's a girls orphanage). I am going to double cast the role of Annie as she is going to work her curly red wig off!!

I also need a minimum of ten males and ten females just to make the show work so would really love fifteen of each ranging in ages.

Oh....and I need a sandy coloured dog who loves treats and won't mind being loved by children on stage!!



*Donna Fairall,
Director, 'Annie'*

There will be light choreography in this show and luckily enough I have secured a pretty amazing choreographer again.....lol!

Performances will be:

Friday 9th May – Sunday 1st June

I am excited and looking forward to another great cast and fun show!!

Donna

AUDITIONS for 'ANNIE'

For Children: (Girls aged 8 - 13 yrs)

Saturday 4th January - 10am start

For Adults:

Sunday 5th January - 10am start

Venue: St John's Anglican Church Hall

McLean Street, Coffs Harbour

for more information visit:
coffsharbourmusicalcomedycompany.com

Leapin' Lizards! We're thrilled to announce that we'll be presenting one of the world's best-loved musicals next year!



Featuring possibly the most well-known children's song ever, 'Tomorrow' (I love ya!), Annie is an adventure for all the family. And a dog, Maybe.

More audition information is available on our website:

www.coffsharbourmusicalcomedycompany.com

UPSTAGED

Annie: Characters and Vocal Ranges

CHARACTER	GENDER	VOCAL RANGE	AGE RANGE	CHARACTER DESCRIPTION
Annie (double cast)	female	Mezzo A—high F	10 -13	Feisty, big-voiced orphan
Oliver Warbucks	male	Baritone C—high F	40 - 65	Stiff but warm hearted billionaire, eventually adopts Annie
Miss Hannigan	female	Mezzo A—Ab	35 - 60	Mean, cantankerous orphanage mistress, hates children, but likes a drink
Rooster' Hannigan	male	Baritone B—high G	25 - 50	Miss Hannigan's no-good brother
Lily St Regis	female	Soprano D—high G	25 - 45	Rooster's floozy girlfriend, plays dumb but is smarter than she looks
Roosevelt	male	Baritone C#—Eb	40 - 65	President of the United States
Molly	female	mezzo A—high F	8 - 10	The littlest orphan
Kate	female	mezzo A—high F	8 - 10	Next to littlest orphan
Tessie	female	mezzo A—high F	9 - 11	The cry-baby orphan
Pepper	female	mezzo A—high F	10 -13	The toughest orphan
July	female	mezzo A—high F	10 -13	the quietest orphan
Duffy	female	mezzo A—high F	10 -13	the biggest orphan
Drake	female	Ensemble vocals	30 - 60	The Butler at the Warbucks Mansion
Mrs Pugh	female	Ensemble vocals	30 - 60	The Head Chef at the Warbucks Mansion
Mrs Greer	female	Ensemble vocals	30 - 60	The Housekeeper at the Warbucks Mansion
Cecille & Annette	female	Mezzos	16 - 30	French Maids at the Warbucks Mansion
Star to be	female	Mezzo belter	18 - 25	Aspiring Broadway Actress
Bert Healy	male	Tenor	25 - 45	Radio personality
Wacky McCracken	male	Baritone	30 - 55	Radio personality
Officer Ward	male	Baritone	25 - 60	Police Officer
The Boylan Sisters	female	Mezzo x 3	18 - 30	Singers on the Bert Healy Show
Louis Howe	male	Spoken	30 - 60	Congressman
Ensemble	male & female	Various	Various	Various
Sandy	dog	no vocals required	fit & friendly	An abandoned dog rescued by Annie

CHMCC 2013/14 COMMITTEE

President

Maureen Burgess
0405 703 837,
mauzabug@hotmail.com

Vice President

Jenny Beatson
6654 4977
jennybeatson@hotmail.com

Secretary

Di O'Ferrall
6653 7828
0432 518112
beachmob4@bigpond.com

Treasurer

Peter Hodges
0414 582638
peter@virtuallyorganised.com.au

Committee

Judi Williams
6652 1625
jfosterbrown@gmail.com

*

Donna Fairall
0411 116471
donna@harbourchurch.com.au

*

David Tune
0418 756797
d_tune@aapt.net.au

*

Russell Lane
6653 2237
0412 958 449
rarscal@hotmail.com

Pam Lane

6653 2237
pam.lane@ncahs.health.nsw.gov.au

*

Shalla Thomas

6651 2143
0400 826711
gwandalan54@gmail.com

Contact the whole committee by
email to:
coffsharbourmcc@gmail.com



CONTACT US

Mail: PO Box 1466, Coffs Harbour, NSW 2450

Email: coffsharbourmcc@gmail.com

Website: coffsharbourmusicalcomedycompany.com

Facebook: Coffs Harbour Musical Comedy Company